



INNOVATION BY DESIGN

www.plugandplay.co.za



1. About Us

2. Service Offerings

- General CCTV
- Off-site Monitoring
- Integrated Surveillance Software (Developed by Plug and Play)
- Access Control: Touchless and Screening
- Vehicle and Visitor Management Systems
- Time and Attendance
- Networking
- Video Alarms, Intruder Alarms & Beams
- Covert/Hidden Cameras
- PA Systems
- Site Audits and Solution Architecture
- Maintenance on Existing Software
- Health and Safety

3. Testimonials

4. Contact Information

We believe that as a company who provide tailored solutions within the security industry, our value is measured not only by preventing loss of lives and loss of assets, but also through providing a service offering of

integrity, excellence and innovation.

ABOUT US



At Plug & Play Solutions, we are driven by a strong force of security professionals who capitalise on innovation and tailor-making solutions unique to our clients business and needs.

We pride ourselves in our cutting-edge technology, and we confidently provide value and excellence across all security-related solutions.

Delivering a wide range of products and services, we satisfy all the security requirements of a wide spectrum of customers; from Retail, Warehousing, Mining Houses, Financial Institutions, Service Industry, Manufacturing Applications, National Key Point Protection, Aviation Security, to Parastatals and Government Departments.

Every site we protect is unique and the security solution is tailored for that particular business risk environment. The size, accessibility, external environment and building type are all factors which we take into consideration when assessing the risk profile of the site.

CONSULT, DESIGN, IMPLEMENT AND MAINTAIN

What has made Plug & Play's offering desirable by countless business owners is our ability to tailor-make a solution suited not only to your business, but to your specific requirements. We take this process very seriously, from the initial consultation right through to the installation.

We pride ourselves in excellent service, not only in designing and implementing a comprehensive solution, but also in our after-sales service and support.

With Plug & Play, you're guaranteed excellent service and an unbeatable solution.



SERVICE OFFERINGS



GENERAL CCTV



We specialise in both IP, HD CCTV and Control Room design systems, which seamlessly integrate with Artificial Intelligence software solutions.

Using the world-renowned brands, which boast unbeatable quality, we proudly offer one of the best CCTV solutions available today.

Our accredited technical teams go through extensive training, and their attention to detail makes Plug & Play installed solutions one of the most professional and neat installations around.

OFF-SITE MONITORING

We have a dedicated on-site surveillance team who Monitor your business' CCTV cameras from our high-tech surveillance rooms, based at our Head Office.

Offering these services to major companies across South Africa, we boast excellent results with both Proactive and Reactive monitoring, using alarm, trigger and artificial intelligence-based off-site monitoring.

Auditing & Editing Footage

The footage which we capture is audited and/or edited, including voice overlay, sub-titles, etc. all of which are provided to the client in a format that can be presented in a court of law, at CCMA cases and in disciplinary hearings.

We have extensive experience where the footage provided has been the deciding factor in various cases which our clients have fought. All our viewers are trained and PSIRA registered.

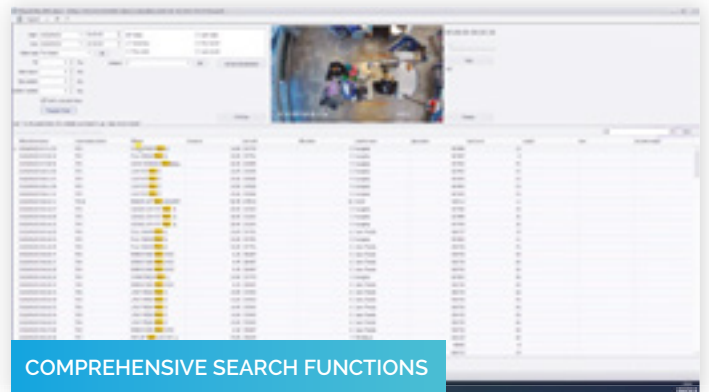


"Live video monitoring services are powerful tools for protecting businesses in a variety of industries, including yours."

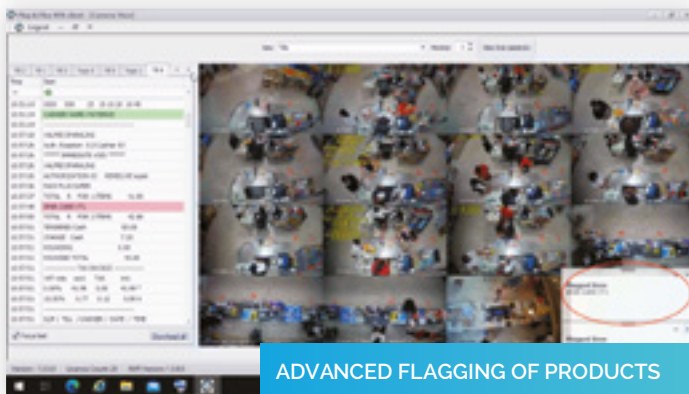
INTEGRATED SURVEILLANCE SOFTWARE



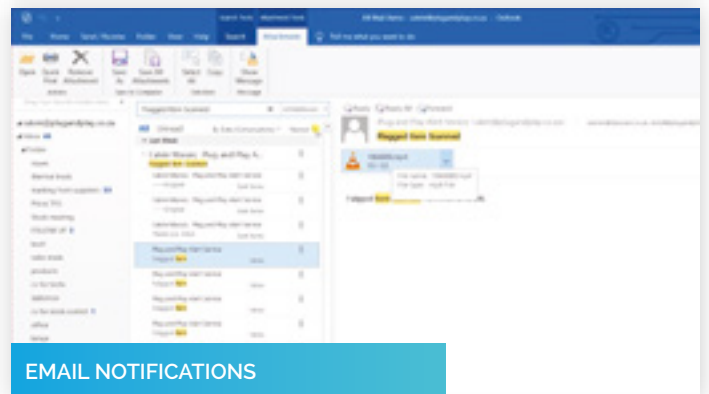
OVERLAY & NEXT-TO LAY



COMPREHENSIVE SEARCH FUNCTIONS



ADVANCED FLAGGING OF PRODUCTS



EMAIL NOTIFICATIONS

POS SOLUTION BREAKDOWN

Rental options include:

1. Point of Sale Integration
2. Internet
3. Monitoring
4. Maintenance

Additional Add-Ons:

The aforementioned products form the base of our Point of Sale Intelligence Solution, however we are also specialists in the following areas, and can provide quotations upon request:

- Scales
- License Plate Recognition
- Receiving, scanning etc.
- Viewing station / monitor with setup on-site
- Maintain your entire store monthly
- SD WAN
- Firewalls
- Cloud & Hosting
- Tailor-made requests
- etc.



ACCESS CONTROL

Access control is one of the most in-demand solutions in the security sector, and one of the most diverse in its offerings. Including everything from the hundreds of Entrance Access systems, Facial Recognition, as well as the ever-increasingly popular License Plate Recognition solutions that scan vehicles up to 1km away, we offer it all.



Touchless Access Control & Screening

Key Benefits to Touchless Technology

- **Non-contact**

Distances range from 1m to 9m depending on technology.

- **Non-invasive**

No need to physically stop a person to take a reading.

- **No human error**

Traditional thermometers require a user to discern between low or high temperatures. This is now determined via AI.

- **No physical manpower**

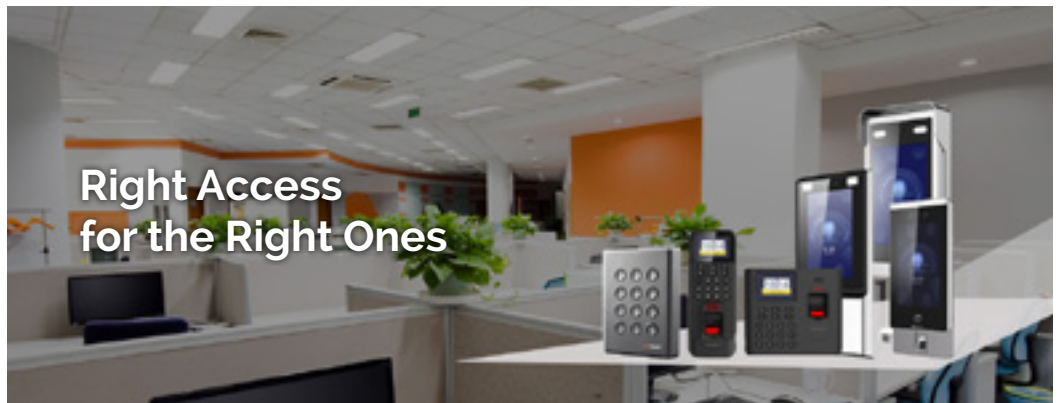
The system could essentially operate autonomously.

- **Record keeping**

Every alarm exception is captured and stored, offering sound corporate governance.

- **Alarm notification**

The necessary escalation can be predetermined by setting up the head end software.



VEHICLE AND VISITOR MANAGEMENT SYSTEMS

It is important to keep in mind that access control is not only the opening of gates and booms, but its actual function in a corporate park is to assign responsibility to an office or tenant. Therefore, Plug & Play offers a "True Access" system, specifically designed for corporate park use. The system integrates with numerous head end devices such as facial, hand and fingerprint recognition.

System Features

Timed Anti Pass-Back • Auto Expiry • Live Logging • Reporting • Auto Reporting • Person of Interest • Behavioral Logging • Time Synchronisation • Expiry • Integrated Visitor Access Control • Web • Auto Verification.

Tenants Access Control

Visitor Access Control

Visitor Pre-Authorization

SLA Agreement

It is essential to keep the systems free from defects to ensure the security of the estate or complex. Our Service Level Agreement covers all maintenance and repair at a fixed monthly cost with no additional repair and call-out costs. The monthly cost is calculated using the failure rate per annum or "FPRA" figure supplied by all manufacturers.

Some of the highlights

- Monthly Maintenance • Unlimited Call Outs •
- 4 Hour Response time 24/7 • Penalty Clause •
- Off-site Monitoring • Ongoing Systems Training.



The answer to Tenants & Visitors access control

TIME & ATTENDANCE

Say goodbye to manual check-in and check-out, which is famous for staff who are prone to logging inaccurate information. Using intelligent integration, we track your staff times, their attendance, as well as various forms of record-keeping.



Stealing time is often considered a greater loss than stealing assets.

Our time and attendance solutions integrate seamlessly with all major payroll software.

NETWORKING

We offer networking, fibre, and commissioning for paid parking systems.



We offer solutions that meet your needs, and your budget!



VIDEO ALARMS, INTRUDER ALARMS & BEAMS

Video Alarms comprises of innovative technology which gives you the ability to have video access and full viewing ability of your premises. Thankfully, if you don't have your own in-house monitoring system, we offer an off-site Monitoring service which is run by our dedicated Surveillance Team, which is a service that we already provide for some of the largest retail groups in South Africa.

With supreme accuracy, the installed beams pick up specific movements on the roof, and alert the relevant response team. This technology is known to be intelligent, drastically reducing the likelihood of triggering false alarms.

The radars which we make use of when building these intelligent alarm systems are second to none. We utilise cutting-edge technology to accurately pinpoint the location and motion trail of intruders.

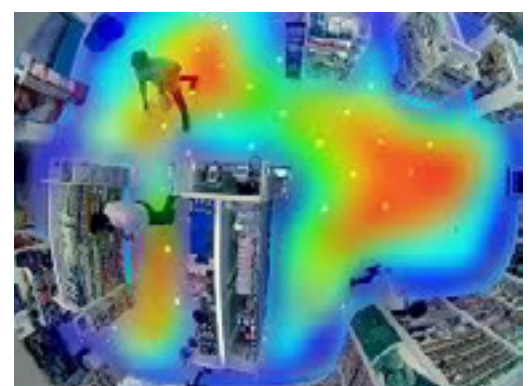
As for the solution we provide for Roof Radar specifically, it can accurately pinpoint up to 32 potential intruders per radar, even in the harshest weather conditions.

Fight-back options include:

Delayed reaction is often too little too late. With these fight-back options, you can have **immediate reaction**.

- * Audio Challenging
- * Instant Fogging / Gas
- * High Power Sirens
- * etc.

REPLACE MANNED
GUARDS & **SAVE UP TO
80% ON COSTS**



COVERT/HIDDEN CAMERAS

Why Your Business Needs a Covert System?

- * Cost Effective
- * Reduce Internal Shrinkage
- * Gain Evidence of Internal Criminal Offences
- * Catch Small Thieves Before They Become Big Thieves
- * Supply Solid Evidence for Court Proceedings and Evidence for CCMA Claims
- * People are stealing more during these tough economic times.



**Giving you eyes for your business,
when you aren't there.**

PA SYSTEMS

Whether it's for offices, retail stores, or school buildings - PA systems are the most versatile and sought after solutions. We offer both the supply and installation of the full turnkey system. Based on your needs, goals and budget, we can steer you in the right direction towards the right equipment.



SITE AUDITS & SOLUTION ARCHITECTURE

Every site we assess is unique, and has its own requirements for the applicable security solution. Instead of offering a blanket solution across every site, we offer free site audits and assessments, and our team tailor a security solution for that particular business risk environment.

The size, accessibility, external environment and building type are all factors which we take into consideration when assessing the risk profile of the site.

MAINTENANCE ON EXISTING SYSTEMS

Regardless of the size of your system, which company installed it, and how modern or outdated it may be, we offer full servicing and maintenance on your existing system.

Our technical team are conveniently based in major cities countrywide, ready to assist you with your security needs.



We offer FREE audits and assessments.



HEALTH AND SAFETY

It is simply impossible to undervalue the importance of health and safety at work. In addition to the law, it is also a good employer's responsibility to make sure your employees are not in danger from their work.

In the Health and Safety at Work Act 1974 (HSWA), we find that there are general rules for health and safety in the workplace that we have to abide by.

The concept of health and safety isn't just important for your staff, but also for everyone who comes into contact with your company, whether they are visitors, clients, subcontractors, or other stakeholders.

That's precisely what we take care of.



SAFETY

SHE Consultancy/SHE Systems/Safety Officer
Legal Compliance Evaluations
SHE Files
Risk Assessments/MHI Risk Assessment



ELECTRICAL

Hazardous Area Classifications
Equipment Audits
COC's



TRAINING

Safety Training
Heights Training
Forklift/Driver Training



TESTIMONIALS

"Quintin and his team did our onsite viewing at Clicks DC Midstream, Day and Night shift, for approximately 5 years, comprising of around 8 – 10 viewers for day and night shifts on rotation. The Team did a great job with regards to helping us with our shrinkage levels and being diligent with processes and theft. They were very good at implementing and making recommendations to better our systems and processes as and when new problems developed. Would highly recommend them."

- Desigan Pillay, Head of Risk, Clicks DC

"I have been using Quintin Marais and his team at Plug and Play Solutions to do electronic security work in our Pick n Pay stores countrywide for 13 years, and have always been completely satisfied with their performance. They do an excellent job, give a honest service and are always willing to go the 'extra mile'.

We have also hired them on occasion for extra jobs, such as drafting specs, setting up POC projects that need piloting, and of course their own certified Plug And Play POS software that Pick n Pay uses to integrate into tills and scales which plays a pivotal role in our shrinkage, etc. They are always at the forefront of technology and always do exactly what we ask of them."

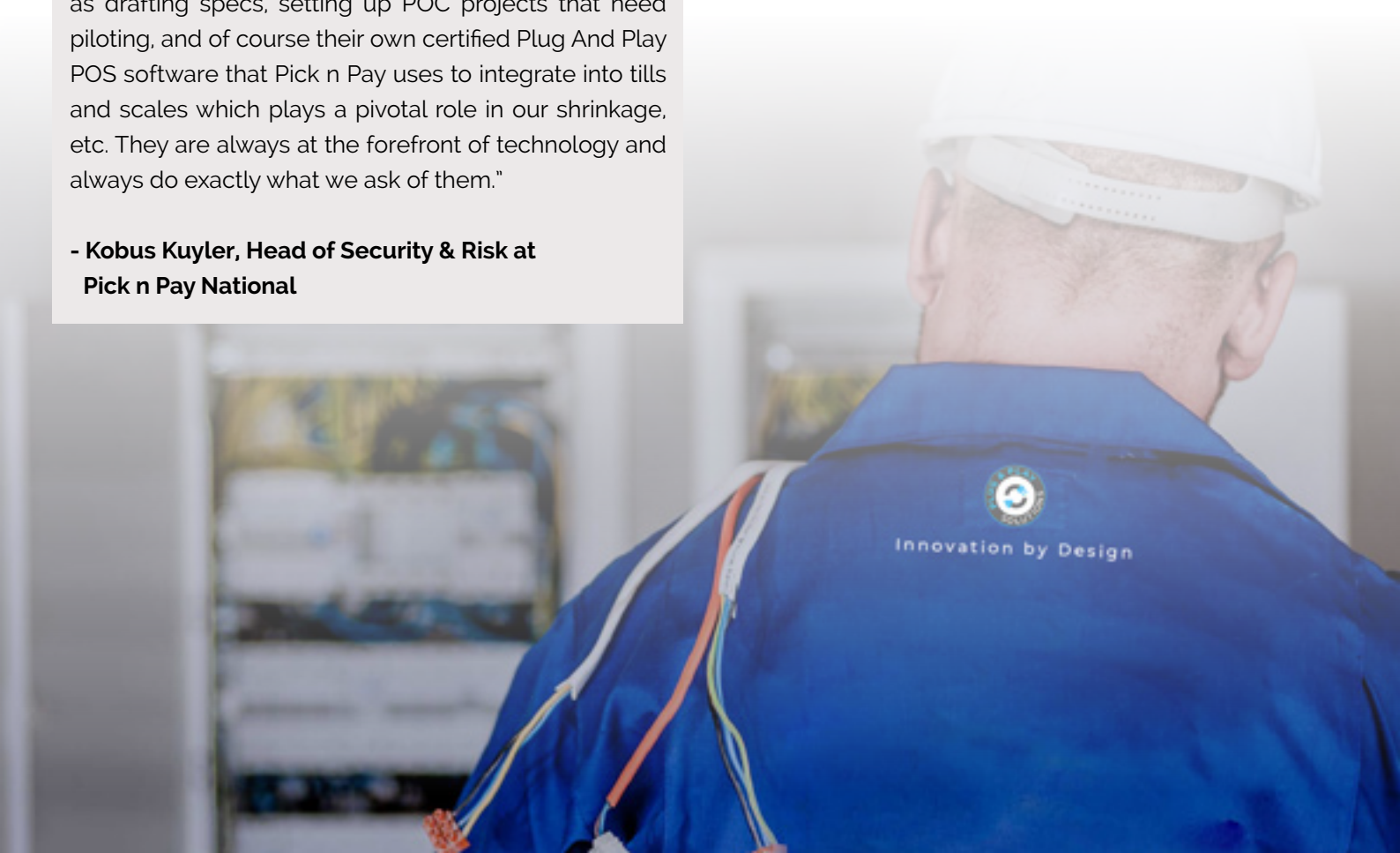
- Kobus Kuyler, Head of Security & Risk at Pick n Pay National

"With our new integration solution from Plug & Play, we are now able to track and follow our top-sellers. Their integration and the improvements in my store due to their systems is remarkable. I would recommend this program to every other store!"

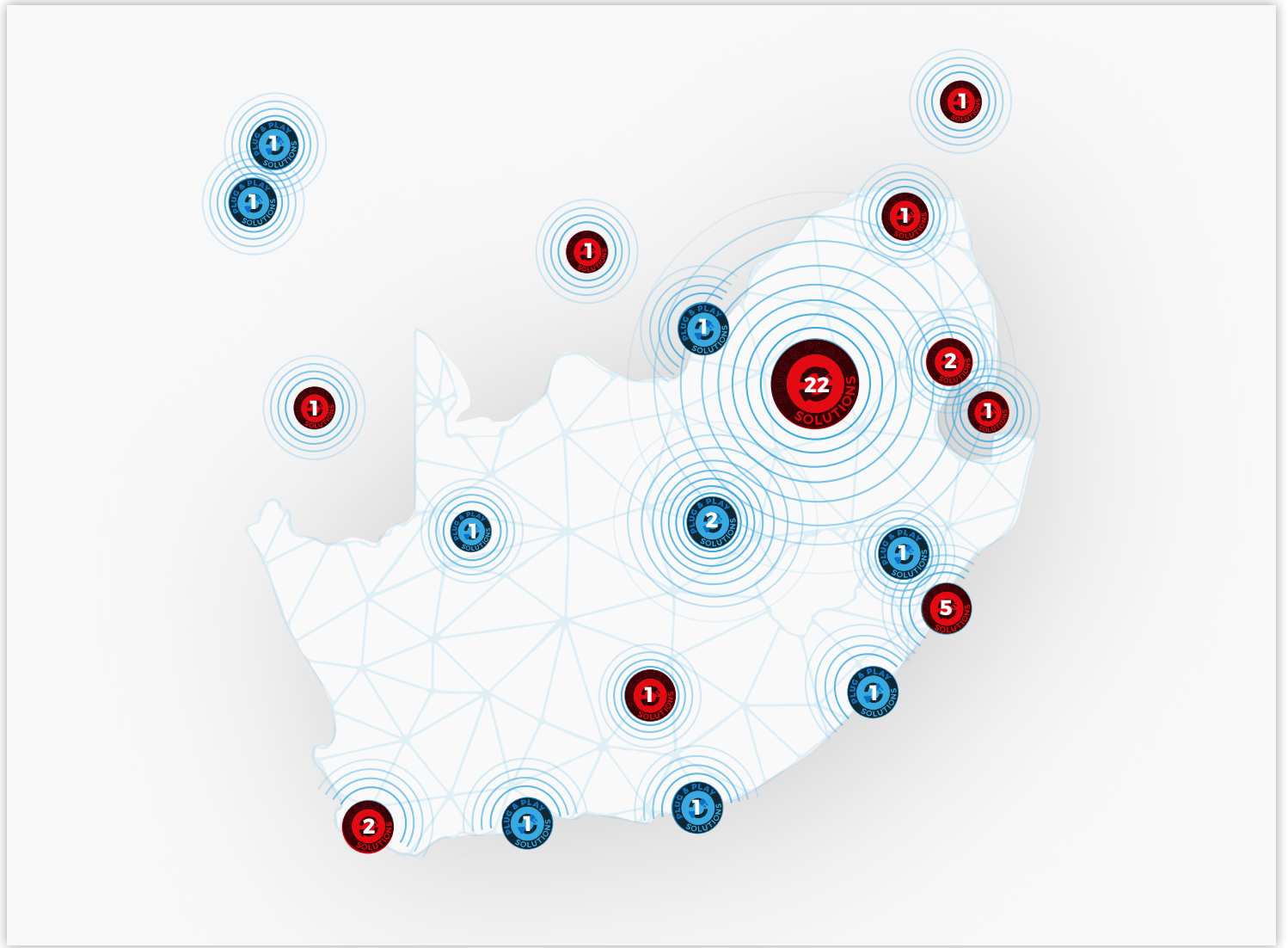
- Owner of SuperSpar, Mall at 55

"Plug & Play has been brilliant! – Not just their product knowledge, but also the solution they provided for us was tailor-made and very professional. We are very happy, and I can strongly recommend Plug & Play for any safety requirements that you might have."

- Jacques Faul, CEO of Titans SuperSport Park



WE HAVE YOU COVERED NATIONWIDE



TRUSTED BY





JOIN THE
**GREEN ENERGY
REVOLUTION**



1. About Us

2. Service Offerings

- Hybrid systems
- Batteries, Micro Grids, and Grid Tie systems
- Finance modelling
- Maintenance and operations
- Monitoring systems
- Consultation on electrical engineering
- Renewable Energy Feasibility Studies
- Mediation of Energy Storage

3. Testimonials

4. Contact Information

Plug and Play Energy delivers top quality products at affordable prices. The market is constantly monitored for new technologies and better solutions, while maintaining the high standards and professional workmanship customers deserve.

ABOUT US



Plug and Play Energy is a top quality provider of renewable solar energy solutions in South Africa. Our mission is to provide high-quality, cost-effective energy solutions to all South Africans, no matter what their needs are.

We provide and install optimized electricity solutions for single houses, multi-tenant industrial complexes, retail environments, agricultural concerns, solar farms and more. We also offer turnkey solar solutions to other service providers in the renewable energy industry.

Our projects range from small residential installations to large commercial ones. We are helping hundreds of customers across South Africa to reduce their electricity bills or even completely eliminate them through our innovative solar solutions.

We are passionate about what we do and it shows in the quality of our work.

CONSULT, DESIGN, IMPLEMENT AND MAINTAIN

With branches nationally we have a wide reach for support.

Although our main product is solar energy, we have a dynamic approach to renewable energy and look at energy utilization holistically. After careful review and consideration of required processes and energy efficiency, we find options and solutions which improves synergy.

Understanding that every company is different, we work with our customers to understand their operations to remove all assumptions and guess work when compiling and modelling well-presented in-depth studies and solution options by conducting energy audits.

We would love to work for you in improving your energy security.



Help preserve the planet for future generations.

The more renewable energy replaces fossil fuel as our primary source of energy, the better our environment will be in the future.

Plug and Play Energy delivers top quality products at affordable prices. The market is constantly monitored for new technologies and better solutions, while maintaining the high standards and professional workmanship customers deserve.



Even in a world full of uncertainty, we can rely on the sun rising each morning, providing enough energy to power our planet many times over.

SOLAR PRODUCTS



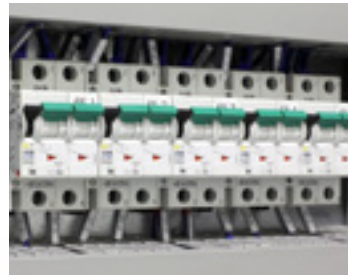
INVERTERS

Plug and Play Energy installs Schneider, Victron and Sungrow inverters, and we have expertise in both brands, as well as competence in system commissioning and firmware upgrades.



PV PANELS

Plug and Play Energy only uses panels from Tier 1 panel manufacturers that carry a 20-year linear degradation warranty.



SWITCH GEAR

Customer safety is taken seriously and only top quality products are used. IEC best practice is followed to provide safe installations. No short cuts are taken to make systems cheaper at the cost of safety.



BATTERIES

Embrace a future where the lights stay on! Lithium-ion batteries have become more and more affordable. Battery back-up systems ensure continuity of power.

HOME GROWN MOUNTING SYSTEMS



Plug and Play Energy has a mounting structure suitable for almost all roof types, with thatch being our one exception. We also have a carport solution which can be made water resistant.



Plug and Play Energy has developed a solar mounting structure which complies with all the leading best practices and standards. The 100% aluminium rail is locally produced with 95% of the other components also locally sourced.



Local is lekker! Our system is easy to install and good for the country. Plug and Play Energy is doing what it can to enhance local economic growth and environmental sustainability.



No Project Too Big Or Too Small

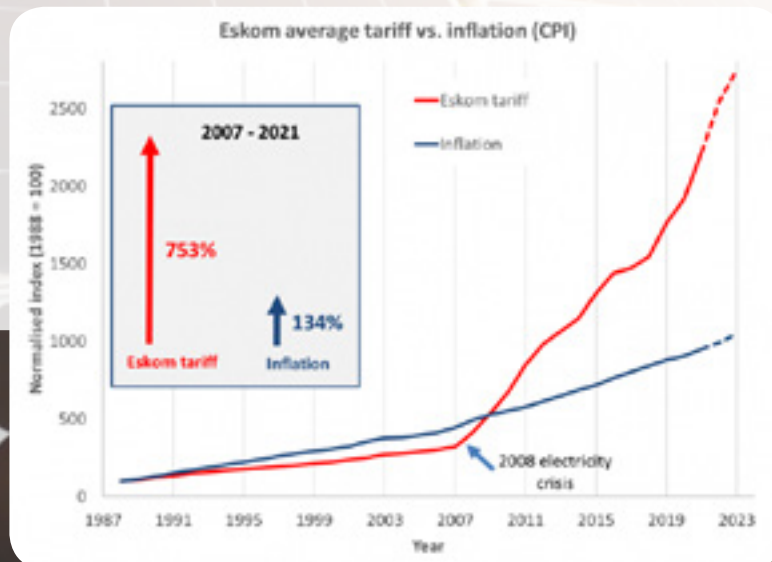
Have you seen Eskom's shocking forecast of increases over the next few years?

- Now – 20.5%
- 2023 – 15.7%
- 2024 – 10%

Meaning a potential increase of up to **nearly 50% in the next 3 years!**

Don't become part of these increases.

See below the Eskom tariff vs. inflation graph



SERVICE OFFERINGS



HYBRID SYSTEMS

One of Plug & Play Energy's specialties is supplying 24/7 power to client operations through the use of solar PV, batteries and generators. Plug & Play Energy has server sites with over 4 years of 100% uptime.

BATTERIES, MICRO GRIDS, & GRID TIE SYSTEMS

The skills we have allow us to design, build, repair and/or optimize solar panels, inverters, and battery systems of all shapes and sizes.

FINANCE MODELLING

We have the capability to model and create business plans for solar solutions. However, for more complex solutions we turn to our financial partners for PPA or other financed options.

MAINTENANCE AND OPERATIONS

The engineers at our company have extensive experience maintaining a variety of commercial and industrial plant types.



MONITORING SYSTEMS

In order to manage the systems, Plug & Play Energy offers a comprehensive monitoring platform to assist their system financiers, clients, and technical personnel. We offer this as a monitoring portal and service off-site.

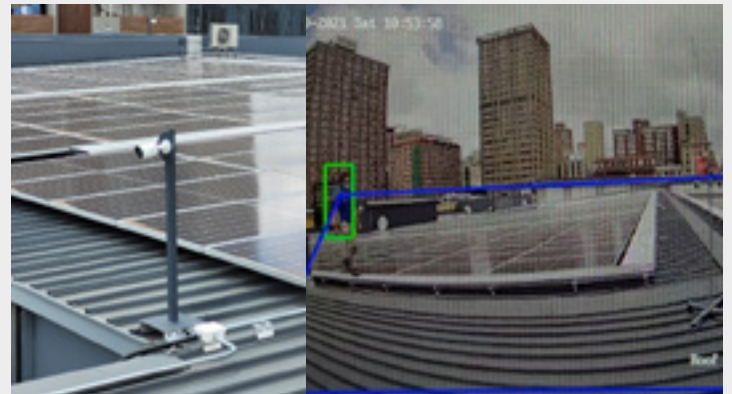
Solar monitoring is a great way to identify production issues early on, such as faulty wires or solar panel issues. Real-time data makes it easier to identify problems quickly before they cause a significant decrease in solar energy production. We give professional feedback with reports, off-site live.



Protect your panels (Value Add)

Surveillance/Alarm systems

We use Artificial intelligence electronic security systems to protect against theft of panels. We use CCTV, intruder & video alarms, radar, trip wires, lighting, locking fasteners etc. with fight back options (Voice, Fog, Sirens, Strobes etc.) to minimise your risk of losing your entire financial investment.



Pest Protection

A problem never mentioned by solar panel installers are pest birds.

Birds can do significant damage to your investment!

Fixing mesh around the sides of solar panels is a popular method of protecting them. Mesh will be used to block off the area so that birds are not able to access it. This innovative system keeps birds away from your solar panel systems, protecting your investment. Installation is easy, and the cover can be removed for maintenance and cleaning.



CONSULTATION ON ELECTRICAL ENGINEERING

In addition to audits and designs, we can carry out grid studies and system optimizations with our Engineers.

RENEWABLE ENERGY FEASIBILITY STUDIES

Through our partners, we conduct engineering, environmental, geotechnical, and surveying feasibility studies.

MEDIATION OF ENERGY STORAGE

Using battery-based energy storage to meet demand when it is needed and/or to export energy.



We offer solutions that meet your needs, and your budget!

TESTIMONIALS



"P&P Energy have proven to be a great partner on solar PV projects in South Africa. Through their experienced design team and efficient procurement and installation, clients are able to obtain greatest value and optimised system for their unique needs. I would certainly recommend P&P Energy for any residential and C&I solar PV projects."

- Sheldon Bailey, MD - TriEnergy

"Very professional people. Great work and support. The team paid attention to every detail for the projects we gave them, ranging from 100 to 300kw systems. Love the off site monitoring system and production reporting. My peak production is as expected and seen substantial reduction on electricity bill. I encourage people to go solar/green, because that's the right thing to do, during these testing times."

- Chad Francis, CEO: Chemipol Solutions, Liquidcolours, Kannar Earth science, Speedbird Investment Holdings

"Plug and play has looked after my store for the last 3 years and ever since implementing my solar features I have never had a problem. Coupled with great service and friendly technicians they have always helped us with pleasure. Would highly recommend them!"

- TJ Bryant, Restaurant Chain Owner

"The most efficient team. Work performed at the highest level of professionalism. Superior products. Thank you kindly."

- Rochelle Van Rooyen, Head of Risk HP

"We as the Landman Family would like to take this opportunity to thank you for the installation."

Firstly Thank You for the professional way in that you handle the situation and that you reacted in the speedy manner that you did. Quintin to You Thank You for this it is really appreciated. You are a True Gentlemen and a Incredible example to all.

To the Installation Team thank You for the professional and courteous way that you all handle the situation with Our Mother during this period. The way the team conducted them selves when they went in to measure up was impeccable and we would like to Thank them for this.

On the day of the installation to all the Guys that were there to install the system Well Done. The installation is neat and professionally done, once again the Team was impeccable in their manner.

Well done and Thank You from the bottom of Our Hearts."

- Landman Family



Innovation by Design

HEAD OFFICE

Tel: 0861 PLUG PLAY - (012) 667 2513 / 18

E-Mail: sales@plugandplay.co.za

www.plugandplay.co.za

CONTACT PERSONS:

Quintin Marais: 083 734 4696

Calvin Marais: 083 307 3081

Jason Strauss: 079 159 2562



www.facebook.com/plugandplaysolutions/



www.instagram.com/plugandplaysolutions/



www.linkedin.com/company/plug-play-solutions/